

## NT NRM COMMUNITY GRANTS 2010-2011

### Overview

The Natural Resource Management Board (NT) is the recognised regional NRM organisation for the Northern Territory. It works to promote and nurture partnerships with communities, land managers, governments and other stakeholders to protect and sustainably manage the unique ecological systems of the Northern Territory.

With funding under the Australian Government's Caring For Our Country (CFOC) initiative, the NRMB (NT) is establishing two grants programs to address CFOC priority targets in the Northern Territory. Grants are being made available to support community groups, landholders and other organisations to plan and implement actions protecting native biodiversity and improving the management of soil and water resources. Two programs of funding are being offered;

<b>Local Grants</b>	<b>up to \$20,000 (excluding GST)</b>
<b>Landscape Grants</b>	<b>up to \$50,000 (excluding GST)</b>

Potential applicants should note although there is considerable overlap in the targets to be addressed by Local and Landscape grants, some differences exist between them.

NRMB (NT) is keen to maximise the strategic outcomes from this funding by encouraging groups and stakeholders to coordinate in developing proposals, either by addressing common NRM challenges in adjacent areas, or by overlaying complementary NRM activities within the same high value area. NRMB (NT) also encourages proposals which constitute annual or biennial stages of longer-term projects, and is committed to support worthwhile projects through successive years where this clearly adds value to outcomes.

## 1. Eligibility Criteria

### Who can apply?

Applicants for both Local and Landscape grants must either themselves be incorporated legal entities, or be sponsored by an incorporated, not-for-profit organisation that accepts legal and financial responsibility for the grant.

- Community groups with an interest in NRM or conservation
- Indigenous land and sea management groups
- Non-Governmental Organisations
- Local Government bodies\*\*
- Landholders

Groups already in receipt of NRMB (NT) funding are not eligible to apply for further funding until their first project is acquitted. However, project proponents are encouraged to submit follow-up applications through successive years where this can be shown to build upon previous work.

\*\* Where Project activities are outside of core service responsibilities in and partnership with community groups

### What can be funded?

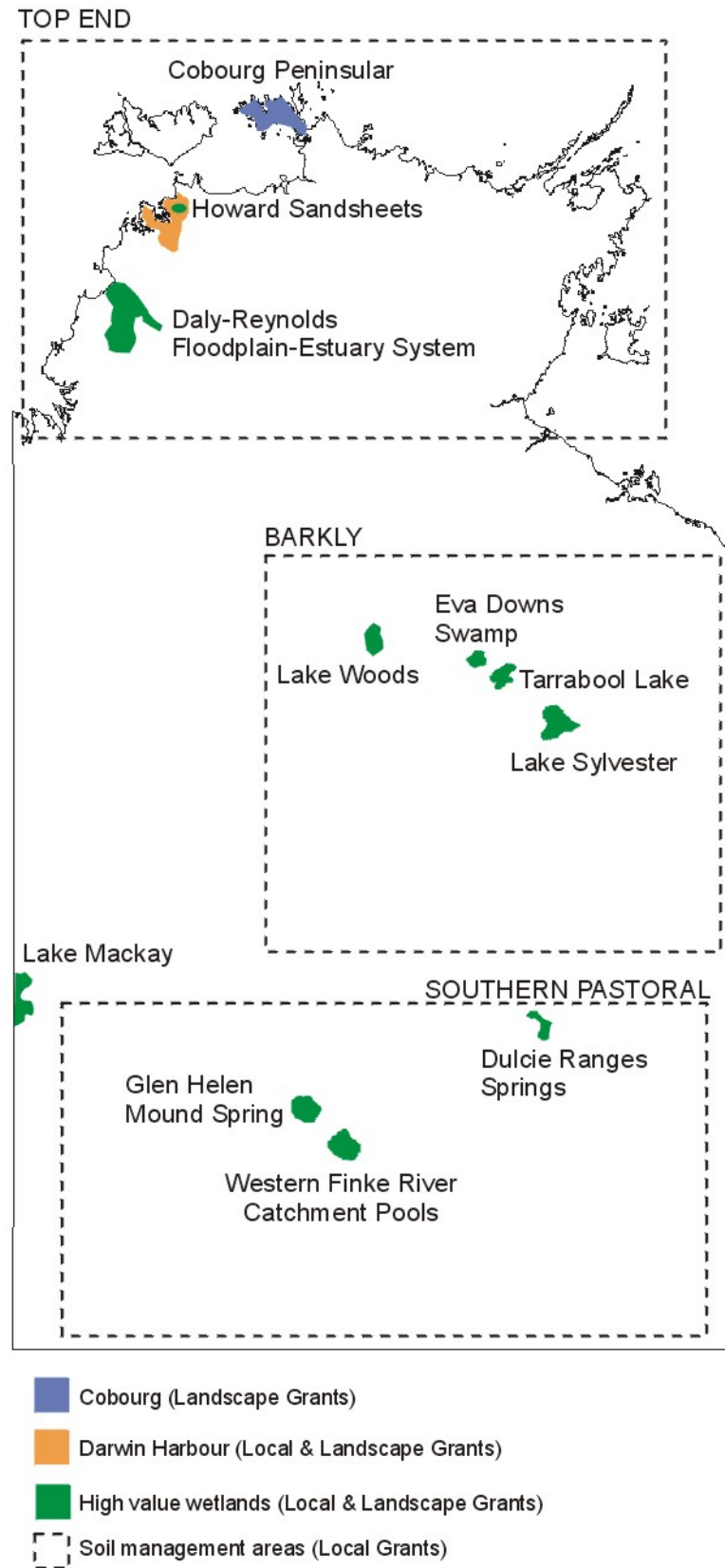
Project proposals must address the program targets for Local and Landscape grants, set out below. Items eligible for funding under NRMB (NT) Local and Landscape grants include;

Eligible	
<b>Materials</b>	Purchase of fencing materials, troughs, tanks or equipment (where proponents demonstrate there will be an environmentally beneficial ongoing use) together with chemical or biological materials, including delivery costs
<b>Equipment and technical</b>	Hire of vehicles, boats, earthmoving, spraying or other machinery including fuel or and operational costs and specialist operator fees
<b>Labour</b>	The cost of engaging additional or contract labour to undertake on-ground actions including expert consultation services
<b>Community capacity</b>	Development of informational materials raising public awareness, training and community skills, and support for group operational capacity.
<b>Administrative</b>	Insurance and costs associated with obtaining cultural clearance and permits for on-ground works, together with final audit costs (for Community grants) up to \$1000 but in total not exceeding 15% of the total grant

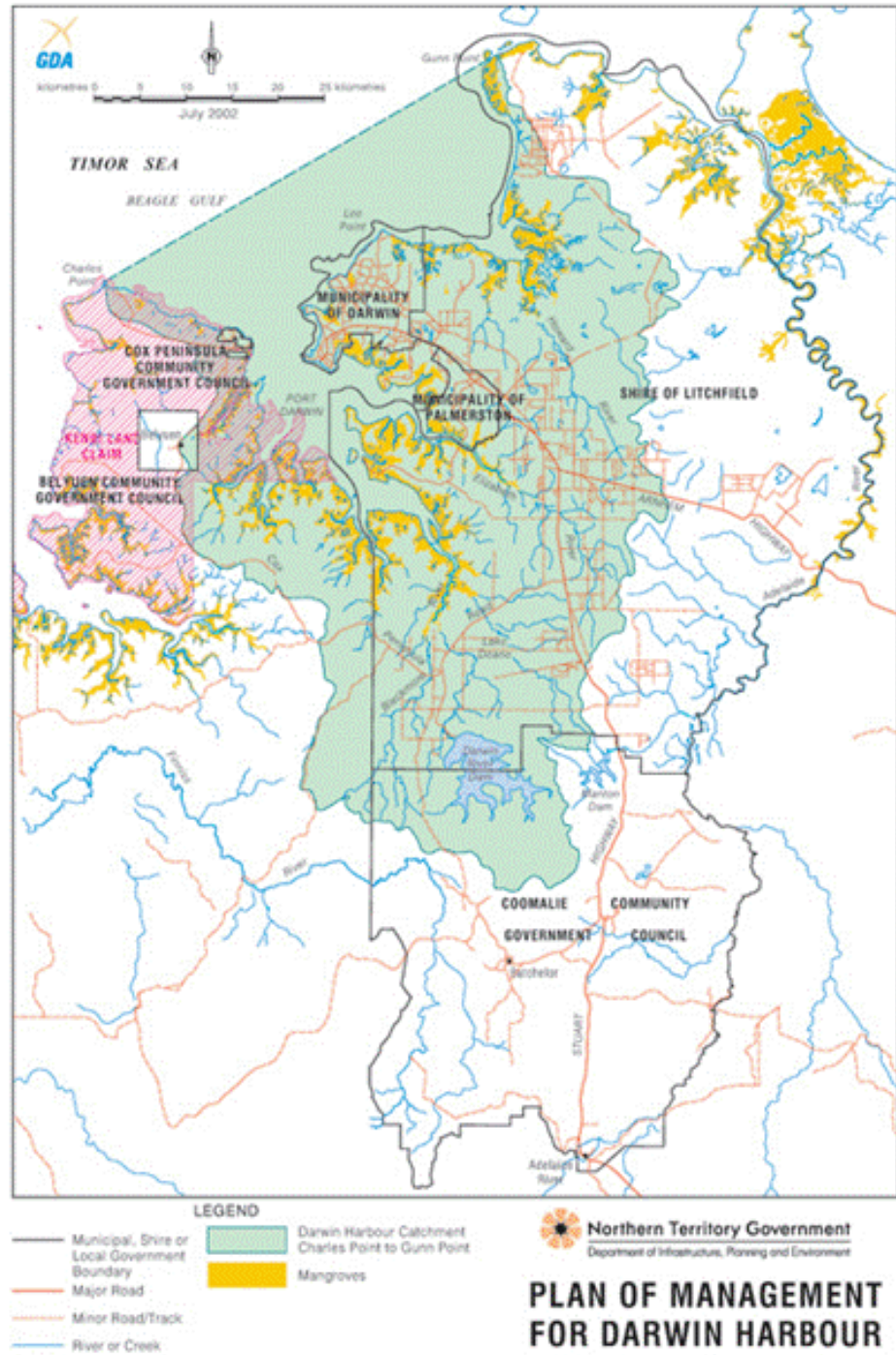
## Program targets

	<b>Priority targets</b>	<b>Where</b>	<b>Examples of eligible activities</b>
<b>Local Grants (under \$20,000)</b>	Control of weeds in accordance with WONS management plan	WONS listed species anywhere in NT	<ul style="list-style-type: none"> <li>• Training for weeds control</li> <li>• Weeds surveys</li> <li>• Weeds eradication &amp; maintenance</li> </ul>
	Invasive plant and feral animal control in high conservation value aquatic ecosystems* in accordance with management plans	*High value wetlands as per CFOC business plan (Map 1)	<ul style="list-style-type: none"> <li>• Weed and feral species control</li> <li>• Fencing and site protection</li> </ul>
	Water quality improvement activities in Darwin Harbour catchment consistent with Darwin Harbour Water Quality protection Plan	Darwin Harbour Catchment (Map 2)	<ul style="list-style-type: none"> <li>• Water quality monitoring</li> <li>• Monitoring environmental indicators</li> <li>• Revegetation and riparian protection</li> <li>• Wetlands and coastal protection</li> </ul>
	Best practice management of economically productive lands to mitigate water or wind erosion of soil	Top End, Barkly or Southern pastoral districts (Map 1)	<ul style="list-style-type: none"> <li>• Best practice fire-management</li> <li>• Revegetation, land cover</li> <li>• Soil conservation measures</li> </ul>
<b>Landscape Grants (under \$50,000)</b>	Invasive plant and feral animal control in high conservation value aquatic ecosystems* in accordance with management plans	*High value wetlands as per CFOC business plan (Map 1)	<ul style="list-style-type: none"> <li>• Weed and feral species control</li> <li>• Fencing and site protection</li> </ul>
	Water quality improvement activities in Darwin Harbour catchment consistent with Darwin Harbour Water Quality protection Plan	Darwin Harbour Catchment (Map 2)	<ul style="list-style-type: none"> <li>• Water quality monitoring</li> <li>• Monitoring environmental indicators</li> <li>• Revegetation and riparian protection</li> <li>• Wetlands and coastal protection</li> </ul>
	Eradication of Snake weed and ornamental Rubber Vine from Cobourg Peninsula**	Cobourg Peninsula **(Ramsar wetlands)	<ul style="list-style-type: none"> <li>• Capacity building for weeds control</li> <li>• Weeds eradication</li> </ul>

Map 1: Local and Landscape Grants: Priority areas



*Map 2: Darwin Harbour Catchment Area*



## Project Timeframes

Proponents whose projects are funded under the Local Grants Program will have until 31 December 2010 to complete the objectives of the project, All Project reports to be submitted by 31 January 2011 and financial acquittals due within 30 days of receipt of final payment.

Proponents whose projects are funded under the Landscape Grants program will have until 30 June 2011 to complete the objectives of the project. All Project reports to be submitted by 30 July 2011 and financial acquittal supported by an audited financial statement due within 60 days of receipt of final payment.

## Coordinated and multi-year proposals

You will strengthen your proposal if you can demonstrate that your planned activities are coordinated with the activities of other groups, and that your project either extends the geographic coverage of another project, or overlays complementary NRM activities in the same area, creating positive synergies.

The NRMB (NT) also welcomes proposals for strategically significant multi-year projects than can be broken down into sub-components and funded over successive years either as Local or Landscape grants. Special recognition will be given to proposals which can demonstrate this type of additional strategic value. Proponents are required to describe wider project objectives, planned actions and synergies as justification for coordinated and multi-year proposals.

A proposal funded as part of a multi-year project will not automatically guarantee funding in subsequent years, but the strategic value of follow-on steps will be recognised in future funding rounds.

## Terms and conditions of funding

If your funding application is successful, the NRMB (NT) requires that your project meets some simple conditions;

- You must have all the required consents and approvals to undertake your project activities, including (where appropriate), consultation with the Traditional Owners for the site.
- It is the responsibility of grant recipients to ensure that they have appropriate public liability insurance for the period of their project.
- Recipients of Landscape grants will be required to demonstrate significant in-kind contributions to the project, and these should ideally match the value of funding sought.
- If your project lasts longer than six months before completion, you will be required to submit a short interim report at six month intervals until submission of a final report.
- Recipients of Landscape grants will need to submit an interim milestone report to receive their second payment.
- Local grants must be acquitted within 13 months, and Landscape grants within 20 months.

## What are acceptable proponent contributions?

Proponent contributions to activities are mandatory in proposals for landscape grants and are encouraged for Local grants. Contributions may either be made as cash or in-kind. Eligible proponent contributions may include;

- Proponent labour, volunteer labour or staff time, (charged as person/hours at competitive rates).
- Use of privately-owned machinery, vehicles and other equipment, together with fuel and other associated running costs (charged at competitive rates for hire).
- Administration, office and legal costs necessary for delivery of the project.

## How to apply?

If you want to apply for a Local or Landscape grant, simply complete an EOI form (to be published) and send it to the NRMB (NT).

Email: [contracts@nrmbnt.org.au](mailto:contracts@nrmbnt.org.au)

Post: Natural Resources Management Board (NT)  
GPO Box 2775 Darwin NT 0801

Hand Delivery: Natural Resource Management Board NT (Inc.) - Regional Offices

**You will be notified as to whether your project proposal is eligible for NT NRM Community Grant Funds by early January.** If your project proposal is eligible, you will be provided with application guidelines and an application form.

## Need more Information?

If you have questions about either Local or Landscape grants, or the grants process please contact one of the Natural Resource Management Board Staff listed below:

Anne Palmer – NT NRM Contract and Grants Manager  
Level 5 Harbour View Plaza Darwin  
Phone 08 89993786 Fax 08 89994100  
Email: [anne.palmer@nrmbnt.org.au](mailto:anne.palmer@nrmbnt.org.au)

Chantal Bramley – NT NRM Regional Coordinator – Top End Region  
Level 5 Harbour View Plaza Darwin  
Phone 08 89994102 Fax 08 89994100  
Email: [chantal.bramley@nrmbnt.org.au](mailto:chantal.bramley@nrmbnt.org.au)

Caroline Biggs – NT NRM Regional Coordinator -Katherine Region  
32 Giles Street Katherine  
Phone 08 89738837 Fax 08 89738894  
Email [caroline.biggs@nrmbnt.org.au](mailto:caroline.biggs@nrmbnt.org.au)

Heidi Groffen – NT NRM Regional Coordinator – Alice Springs and Barkly Region  
First Floor Alice Springs Plaza, Alice Springs  
Phone 08 89519207 Fax 08 89519268  
Email: [heidi.groffen@nrmbnt.org.au](mailto:heidi.groffen@nrmbnt.org.au)

## Useful Links

<http://www.nrm.gov.au/business-plan/index.html>

<http://www.nt.gov.au/nreta/natres/index.html>

[NT NRM COMMUNITY GRANTS SELECTION PROCESS.doc](#)

<http://www.nt.gov.au/nreta/water/quality/docs/finaldraftWQPPreport.pdf>

<http://www.nt.gov.au/nreta/environment/conservation/index.html>